



# i15 VET

Veterinary Blood Gas and Chemistry Analysis System

| Parameter               | Reportable Range      | Resolution | Measurement method    |
|-------------------------|-----------------------|------------|-----------------------|
| pH (pH units)           | 6.5 – 8.0             | 0.001      | Potentiometric sensor |
| pO <sub>2</sub> (mmHg)  | 10 – 700              | 0.1        | Amperometric sensor   |
| pCO <sub>2</sub> (mmHg) | 10 – 150              | 0.1        | Potentiometric sensor |
| Na (mmol/L)             | 100 – 180             | 0.1        | Potentiometric sensor |
| K (mmol/L)              | 2.0 – 9.0             | 0.01       | Potentiometric sensor |
| Ca (mmol/L)             | 0.25 – 2.5            | 0.01       | Potentiometric sensor |
| Cl (mmol/L)             | 65 – 140              | 0.1        | Potentiometric sensor |
| Glu (mg/dL or mmol/L)   | 20 – 700 / 1.1 – 38.9 | 1/0.1      | Amperometric sensor   |
| Lac (mg/dL or mmol/L)   | 2.7 – 180 / 0.3 – 20  | 0.1/0.01   | Amperometric sensor   |
| Hct (%PCV or Fraction)  | 10 – 75 / 0.10 – 0.75 | 1%/0.01    | Conductance sensor    |

## Specification

|                       |   |
|-----------------------|---|
| Throughput            | Results in 1 minute after sample aspiration                             |
| Sample volume         | 140µl   |
| Quality control       | 3 or 5 levels QC, External electronic simulator                         |
| Display               | 7-inch color LCD Display, 800*480                                       |
| Interface             | 4 x USB 2.0 host, 1 x RS232, WLAN                                       |
| Input device          | Touch screen and barcode scanner  |
| Power supply          | 100-240VAC, 50/60Hz   |
| Battery               | 4200mAh rechargeable lithium-ion battery, 50 samples continuous testing |
| Dimensions (W*H*D)    | 238*153*310 mm  |
| Weight                | 3.65 KG   |
| Operation Environment | 10-31 °C; %RH: 25%-80%; 70 -106.6 KPa                                   |

## About Edan

Edan is a healthcare company dedicated to improving the human condition around the world by delivering value-driven, innovative and high-quality medical products and services. For over 20 years, Edan has been pioneering a comprehensive line of medical solutions that address a broad range of healthcare practices including:

- Diagnostic ECG
- Ultrasound Imaging
- In-Vitro Diagnostics
- Patient Monitoring
- Point-of-Care Testing
- Veterinary
- OB/GYN

Healthcare professionals around the world depend on Edan's breakthrough medical technologies and outstanding customer support.

## Imported & Marketed By:



## Alps Diagnostics Private Limited

Value For Lives...

New No. 10, Old No. 48,  
Ground Floor,  
Sri Venkatesa Perumal Nagar,  
Arumbakkam, Chennai - 600 106.

Mobile : 9445391935 / 9445568169  
Phone : 044 - 2363 2473, 2363 2474  
e-mail : alpsdiagnostics@gmail.com  
Web : www.alpsdiagnostics.com



# EDAN

A world of potential



# i15 VET

Veterinary Blood Gas and Chemistry Analyzer



**i15 trailer**

**Portable, lightweight**

- Capable to run 50 samples with fully-charged battery
- Diagnose at the point of care, patient side, out in the field or exam room

**Easy, Quick and Convenient**

- Zero maintenance
- Minimize hands on time and training requirement
- Auto-sampling
- Report is ready within one minute after sample aspiration

**Accurate and Reliable**

- Innovative microchip liquid control technology and micro-sensor multifunction membrane technology
- High sensitivity and accuracy
- Calibrator, Control and Electronic simulator to TRIPLE guarantee the RESULTS!

**Flexible Data Management**

- Acquire patients' information via barcode/QR code
- Up to 10,000 patient data storage
- 4 USB ports and LAN/WiFi for data management
- Optional data management software

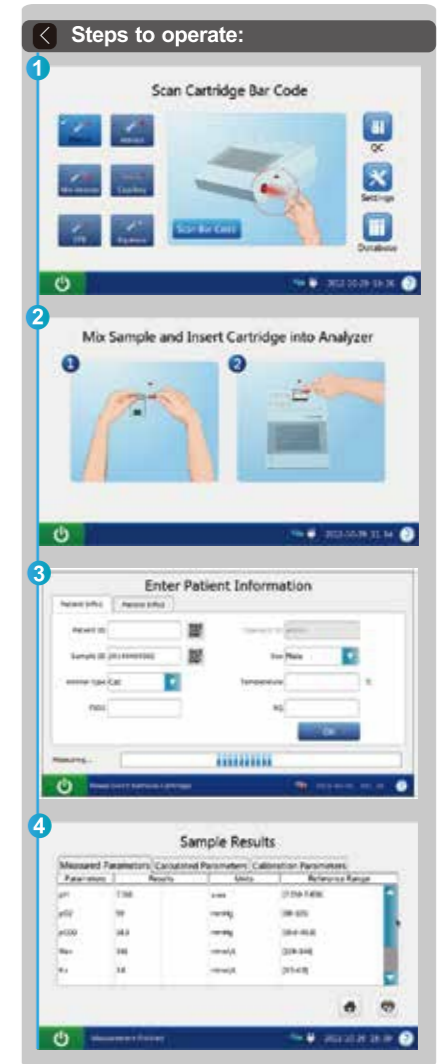
**Multi-parameter cartridge**

- Multi popular time-sensitive parameters come in one cartridge, including ABG, electrolytes and metabolites
- Single-use cartridge avoids contamination
- Room temperature storage with long shelf-life



**Portable and lightweight**

**Touch screen with built-in multimedia tutorials**



# i15 VET

Veterinary Blood Gas and Chemistry Analyzer

**i15 VET Quality Control System**  
Triple Guarantee the Result



**Variety of Veterinary test Cartridges**

|      | pH | pCO <sub>2</sub> | pO <sub>2</sub> | Na | K | Cl | Ca | Hct | Glu | Lac |
|------|----|------------------|-----------------|----|---|----|----|-----|-----|-----|
| BG3  | —  | —                | —               |    |   |    |    |     |     |     |
| BG8  | —  | —                | —               | —  | — | —  | —  | —   |     |     |
| BG4  | —  | —                | —               |    |   |    |    |     |     | —   |
| BG9  | —  | —                | —               | —  | — | —  | —  | —   | —   | —   |
| BG10 | —  | —                | —               | —  | — | —  | —  | —   | —   | —   |
| BC4  |    |                  |                 | —  | — | —  | —  | —   |     |     |

Calculated values: cH+, HCO<sub>3</sub>-act, HCO<sub>3</sub>-std, BE(ecf), BE(B), BB(B), ctCO<sub>2</sub>, sO<sub>2</sub>(est), Ca<sup>++</sup>(7.4), AnGap, tHb(est), pO<sub>2</sub> (A-a), pO<sub>2</sub>(a/A), RI, pO<sub>2</sub>/FIO<sub>2</sub>, cH+(T), pH(T), pCO<sub>2</sub>(T), pO<sub>2</sub>(T), pO<sub>2</sub>(A-a)(T), pO<sub>2</sub>(a/A)(T), RI(T), pO<sub>2</sub>(T)/FIO<sub>2</sub>

Future menu in development: BUN/Urea & Creatinine. Coagulation test (ACT, APTT, PT), Immunoassay panels